

## Application No. 835: Organised bathroom cabinet

Author: Rolf Gugolz, Malters, Switzerland

### More space and better overview in no time

It can be quite challenging to get the bathroom cabinet organised - and keep it that way. It doesn't take long for things to get mixed up and they become hard to find. And then when you need cream or band-aids in a hurry, you struggle to find them.

Our practical magnets can help you get a better overview in no time. We show you different options of how to organise your bathroom cabinet.



### Magnets underneath the shelf

For this life hack, you only need self-adhesive magnetic discs ([www.supermagnete.fr/eng/group/self\\_adhesive\\_magnets](http://www.supermagnete.fr/eng/group/self_adhesive_magnets)), such as S-15-01-STIC ([www.supermagnete.fr/eng/S-15-01-STIC](http://www.supermagnete.fr/eng/S-15-01-STIC)), and binder clips 19 mm ([www.supermagnete.fr/eng/M-MLY-19](http://www.supermagnete.fr/eng/M-MLY-19)) or binder clips 13 mm ([www.supermagnete.fr/eng/M-MLY-13](http://www.supermagnete.fr/eng/M-MLY-13)). Attach the magnetic discs to the underside of the shelf in the desired spots, and press on firmly.



Please note: The surface to which the magnetic discs are glued should be dust-free, clean, and dry. Clean the surface with a suitable cleaner before attaching the magnets and wait until it is dry again. Attach the magnets and let the adhesive dry overnight (the recommended 72 hours would be even better). Thereafter, the magnets are ready to be used and you can start organising your bathroom cabinet. Simply attach the binder clips to the tubes and then the clips to the disc magnets.

The same principle can be used in pantries and kitchen shelves as described in the application "Creating storage space in the pantry" ([www.supermagnete.fr/eng/project102](http://www.supermagnete.fr/eng/project102)).

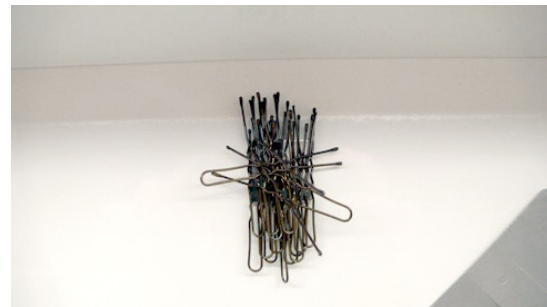
Another creative mounting solution can be achieved with self-adhesive stainless steel discs ([www.supermagnete.fr/eng/FO-9](http://www.supermagnete.fr/eng/FO-9)) or self-adhesive metal discs in grey or white (linked below) and cube magnets, such as W-05-N ([www.supermagnete.fr/eng/W-05-N](http://www.supermagnete.fr/eng/W-05-N)). The stainless steel discs function as the magnetic base on the bottom of the shelf. After the drying period, you can attach the cube magnets. Then, you can hang up nail clippers, tweezers, and even smaller pocket knives.



### **Magnets on the inside of the mirror cabinet**

Addition from customer A.L. from Bern (CH):

We all know the problem with the mirror cabinet in the bathroom: You stow away all sorts of things there until you can't find anything anymore.



My practical solution: Tweezer, scissors, hairpins, etc. are attached to the metal interior or the inside of the door with magnets. This way, everything is easy to spot and grab.

The hairpins, for instance, adhere well to a Q-20-20-03-N ([www.supermagnete.fr/eng/Q-20-20-03-N](http://www.supermagnete.fr/eng/Q-20-20-03-N)) block magnet.

Scissors, tweezers, and metal comb adhere well on the inside door with disc magnets 10x10 mm ([www.supermagnete.fr/eng/S-10-10-N](http://www.supermagnete.fr/eng/S-10-10-N)). This helps you create additional storage space in the bathroom cabinet and leave more room for other things on the shelves.



## Repositionable organiser with magnets

Addition by Anonymous, May 2023:

I came up with the idea of special magnetic organisers for my mirrored bathroom cabinet. Instead of having to go through the hassle of cleaning the shelves, I can simply take these beautiful wooden organisers out and rearrange them as needed.



For the ferromagnetic back wall, I commissioned a metal worker to fabricate a custom-fit back panel made of iron. It can be stuck to the back wall of the bathroom cabinet with double-sided tape. Depending on the size and content, I screwed two or more CS-Q-30-12-04-N ([www.supermagnete.fr/eng/CS-Q-30-12-04-N](http://www.supermagnete.fr/eng/CS-Q-30-12-04-N)) block magnets onto the boxes. To avoid scratching the back panel, I covered the magnets with thin textile adhesive tape. But you should make sure that the colour of the chosen textile tape doesn't rub off.

An additional advantage of the ferromagnetic back panel: cords of toothbrushes or electric shavers can be routed along the wall with magnetic cable holders. Thanks to this magnetic mounting solution, they are no longer in the way inside the bathroom cabinet.



The end result looks great and ensures order in the bathroom cabinet. I like it very much!

*Tip from the supermagnete team:* Cable holders can also be created with Sugru. Learn how you can make such cable holders in our customer application "Desk Cable Holder" ([www.supermagnete.fr/eng/project971](http://www.supermagnete.fr/eng/project971)).

*Note from the supermagnete team:* Please keep in mind that the number of required magnets and their necessary adhesive force depends very much on the ferromagnetic surface and the weight of the filled boxes. Therefore, when choosing the magnets, pay particular attention to the displacement force information.

**Articles used**

FO-9: Stainless steel discs self-adhesive ([www.supermagnete.fr/eng/FO-9](http://www.supermagnete.fr/eng/FO-9))  
PAS-13-W: metal discs self-adhesive white Ø 13 mm ([www.supermagnete.fr/eng/PAS-13-W](http://www.supermagnete.fr/eng/PAS-13-W))  
PAS-20-W: metal discs self-adhesive white Ø 20 mm ([www.supermagnete.fr/eng/PAS-20-W](http://www.supermagnete.fr/eng/PAS-20-W))  
S-10-10-N: Disc magnet Ø 10 mm, height 10 mm ([www.supermagnete.fr/eng/S-10-10-N](http://www.supermagnete.fr/eng/S-10-10-N))  
Q-20-20-03-N: Block magnet 20 x 20 x 3 mm ([www.supermagnete.fr/eng/Q-20-20-03-N](http://www.supermagnete.fr/eng/Q-20-20-03-N))  
W-05-N: Cube magnet 5 mm ([www.supermagnete.fr/eng/W-05-N](http://www.supermagnete.fr/eng/W-05-N))  
W-06-N: Cube magnet 6 mm ([www.supermagnete.fr/eng/W-06-N](http://www.supermagnete.fr/eng/W-06-N))  
S-10-01-STIC: Disc magnet self-adhesive Ø 10 mm, height 1 mm ([www.supermagnete.fr/eng/S-10-01-STIC](http://www.supermagnete.fr/eng/S-10-01-STIC))  
S-13-01-STIC: Disc magnet self-adhesive Ø 13 mm, height 1 mm ([www.supermagnete.fr/eng/S-13-01-STIC](http://www.supermagnete.fr/eng/S-13-01-STIC))  
S-15-02-FOAM: Disc magnet self-adhesive Ø 15 mm, height 2 mm ([www.supermagnete.fr/eng/S-15-02-FOAM](http://www.supermagnete.fr/eng/S-15-02-FOAM))  
PAS-13: metal discs self-adhesive Ø 13 mm ([www.supermagnete.fr/eng/PAS-13](http://www.supermagnete.fr/eng/PAS-13))  
PAS-16: metal discs self-adhesive Ø 16 mm ([www.supermagnete.fr/eng/PAS-16](http://www.supermagnete.fr/eng/PAS-16))  
M-MLY-13: Binder clips "mauly" 13 mm ([www.supermagnete.fr/eng/M-MLY-13](http://www.supermagnete.fr/eng/M-MLY-13))  
M-MLY-19: Binder clips "mauly" 19 mm ([www.supermagnete.fr/eng/M-MLY-19](http://www.supermagnete.fr/eng/M-MLY-19))  
CS-Q-30-12-04-N: Block magnet 30 x 12 x 4 mm ([www.supermagnete.fr/eng/CS-Q-30-12-04-N](http://www.supermagnete.fr/eng/CS-Q-30-12-04-N))

Online since: 11/09/2018

The entire content of this site is protected by copyright. Copying the content or using it elsewhere is not permitted without explicit approval.